

DONATA

PHASE

Design: Ralf Keferstein

OLIGO Lichttechnik GmbH

Meysstr. 22 - 24

DE - 53773 Hennef

Germany








www.oligo.de

info@oligo.de

Art.-Nr. / Item-No.

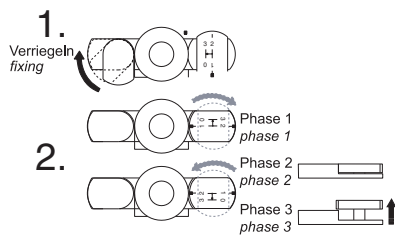
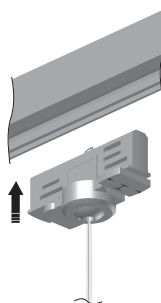
32-909-10-XX**32-909-11-XX**

	max.250V	max. 50W	GZ 10	QPAR 51 / max. 50W QPAR 64 / max. 50W
(D)	Spannung	Belastung	Fassung	Lampe
(GB)	Voltage	Loading	Fitting	Bulb
(NL)	Spanning	Belasting	Fitting	Verlichtingsmiddel
(F)	Tension	Charge	Douille	Ampoule
(I)	Tensione	Carico	Portalamпада	Sorgente luminosa
(ES)	Tensión	Carga	Portalámparas	Lámpara
(P)	Tensão	Carga	Casquilho	Lâmpada
(DK)	Spænding	Belastning	Fatning	Pære
(S)	Spänning	Belastning	Fattning	Ljuskälla
(N)	Spänning	Fatning	Belastning	Lampe
(FI)	Jännite	Kuormitus	Kanta	Lamppu
(TR)	Gerilim	Yük	Duy	Lamba
(PL)	Napięcie	Oprawka	Obciążenie	Lampa
(GR)	Τάση	Υποδοχή	Φορτίο	Λαμπτήρας
(RUS)	Напряжение	Нагрузка	Патрон	Лампочка
(UAE)	الجهد الكهربائي	الدواة	الحمل	المصباح



B



C

