

PROJECT




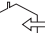


WALL

Design: Raif Keferstein

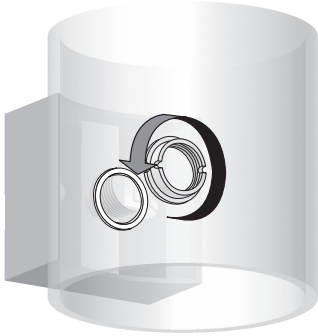
OLIGO Lichttechnik GmbH
Tannenweg 1
DE - 53757 Sankt Augustin
Germany
www.oligo.de
info@oligo.de

Art.-Nr. / Item-No.
40-918-10-XX

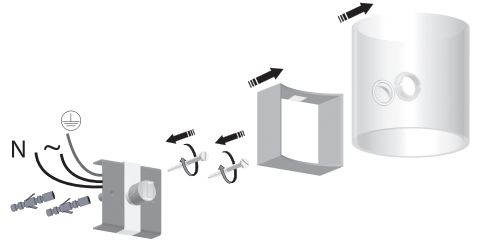
| | max.250V | max. 75W | G9 | QT 14 |
|-------|---------------|------------|--------------|--------------------|
| (D) | Spannung | Belastung | Fassung | Lampe |
| (GB) | Voltage | Loading | Fitting | Bulb |
| (NL) | Spanning | Belasting | Fitting | Verlichtingsmiddel |
| (F) | Tension | Charge | Douille | Ampoule |
| (I) | Tensione | Carico | Portalampada | Sorgente luminosa |
| (ES) | Tensión | Carga | Portaámparas | Lámpara |
| (P) | Tensão | Carga | Casquilho | Lâmpada |
| (DK) | Spænding | Belastning | Fatning | Pære |
| (S) | Spänning | Belastning | Fattning | Ljuskälla |
| (N) | Spänning | Fatning | Belastning | Lampe |
| (FI) | Jännite | Kuormitus | Kanta | Lamppu |
| (TR) | Gerilim | Yük | Duy | Lamba |
| (PL) | Napięcie | Oprawka | Obciążenie | Lampa |
| (GR) | Τάση | Υποδοχή | Φορτίο | Λαμπτήρας |
| (RUS) | Напряжение | Нагрузка | Патрон | Лампочка |
| (JAE) | الجهد الكهربى | الدواة | الحمل | المصباح |

| | |
|---|---|
|  |  |
|  |  |
| | |
| | |
| | |
| | |
|  |  |

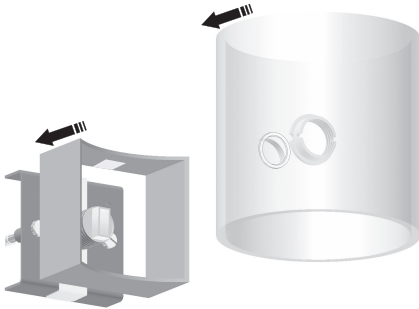
A  
SAFETY INSTRUCTIONS



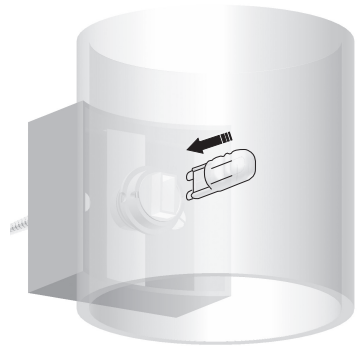
B



C



D



PROJECT




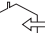


WALL

Design: Raif Keferstein

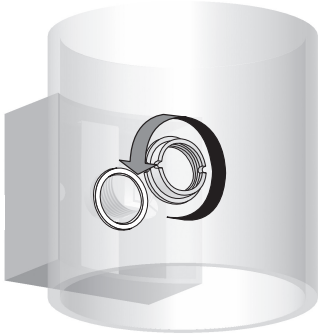
OLIGO Lichttechnik GmbH
Tannenweg 1
DE - 53757 Sankt Augustin
Germany
www.oligo.de
info@oligo.de

Art.-Nr. / Item-No.
40-918-10-XX

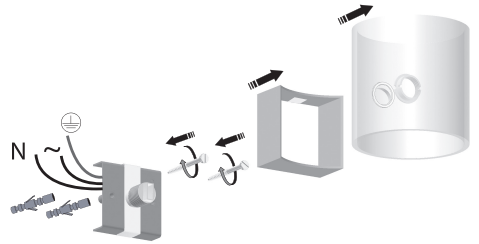
| | max.250V | max. 75W | G9 | QT 14 |
|-------|---------------|------------|--------------|--------------------|
| (D) | Spannung | Belastung | Fassung | Lampe |
| (GB) | Voltage | Loading | Fitting | Bulb |
| (NL) | Spanning | Belasting | Fitting | Verlichtingsmiddel |
| (F) | Tension | Charge | Douille | Ampoule |
| (I) | Tensione | Carico | Portalampada | Sorgente luminosa |
| (ES) | Tensión | Carga | Portaámparas | Lámpara |
| (P) | Tensão | Carga | Casquilho | Lâmpada |
| (DK) | Spænding | Belastning | Fatning | Pære |
| (S) | Spänning | Belastning | Fattning | Ljuskälla |
| (N) | Spänning | Fatning | Belastning | Lampe |
| (FI) | Jännite | Kuormitus | Kanta | Lamppu |
| (TR) | Gerilim | Yük | Duy | Lamba |
| (PL) | Napięcie | Oprawka | Obciążenie | Lampa |
| (GR) | Τάση | Υποδοχή | Φορτίο | Λαμπτήρας |
| (RUS) | Напряжение | Нагрузка | Патрон | Лампочка |
| (JAE) | الجهد الكهربى | الدواة | الحمل | المصباح |

| | |
|---|---|
|  |  |
|  |  |
| | |
| | |
| | |
| | |
|  |  |

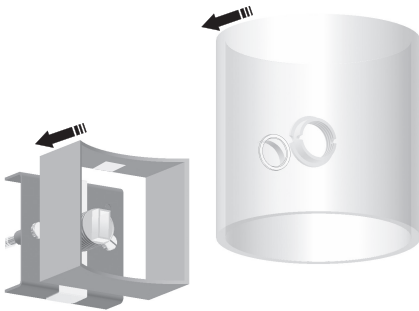
A  
SAFETY INSTRUCTIONS



B



C



D

